

# Economic Development Priorities for Federal Statistical Data: The Case for LAPI Estimates

Stephan J. Goetz\*

Professor and Director

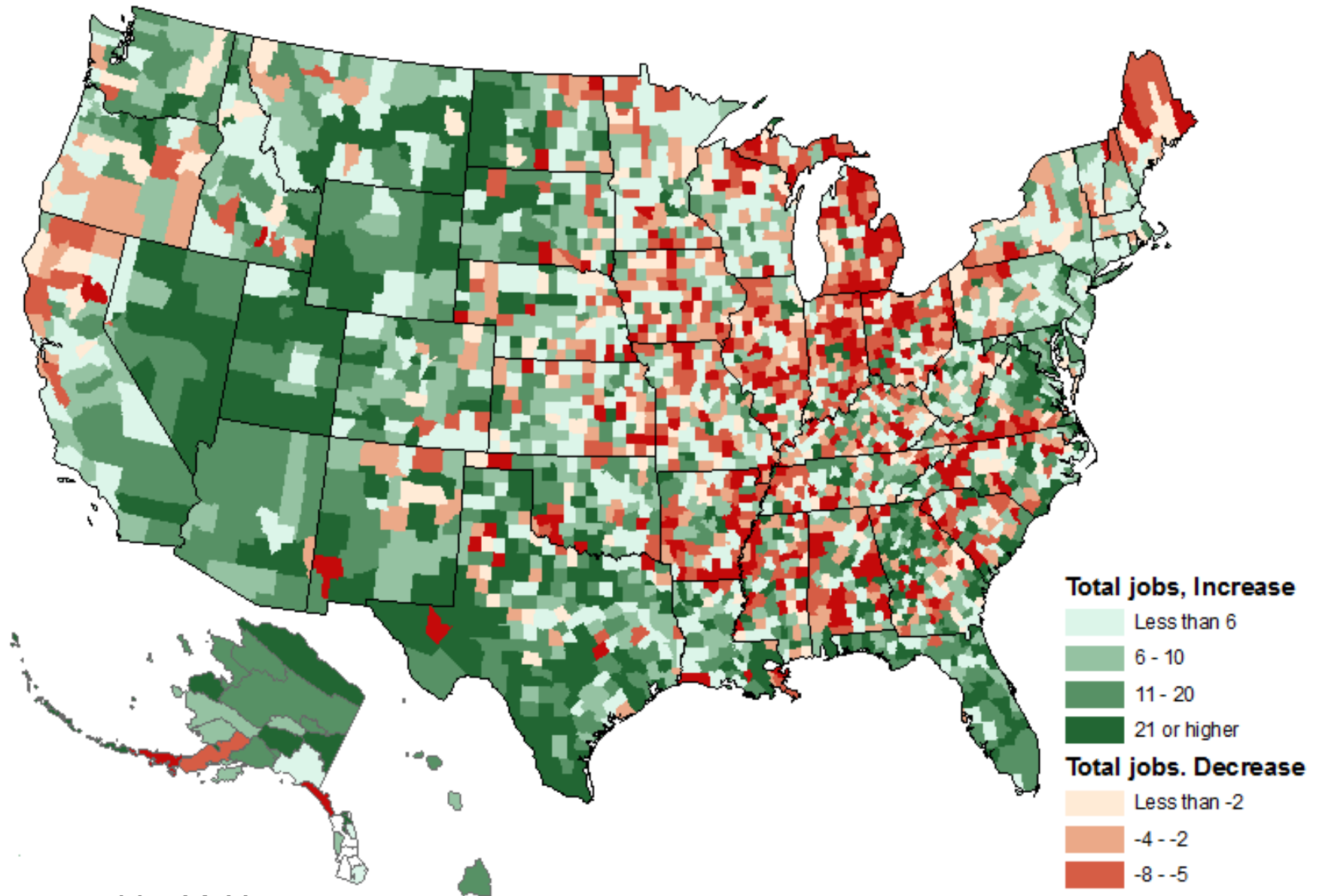
Penn State University, NERCRD\*\* and NARDeP\*\*\*



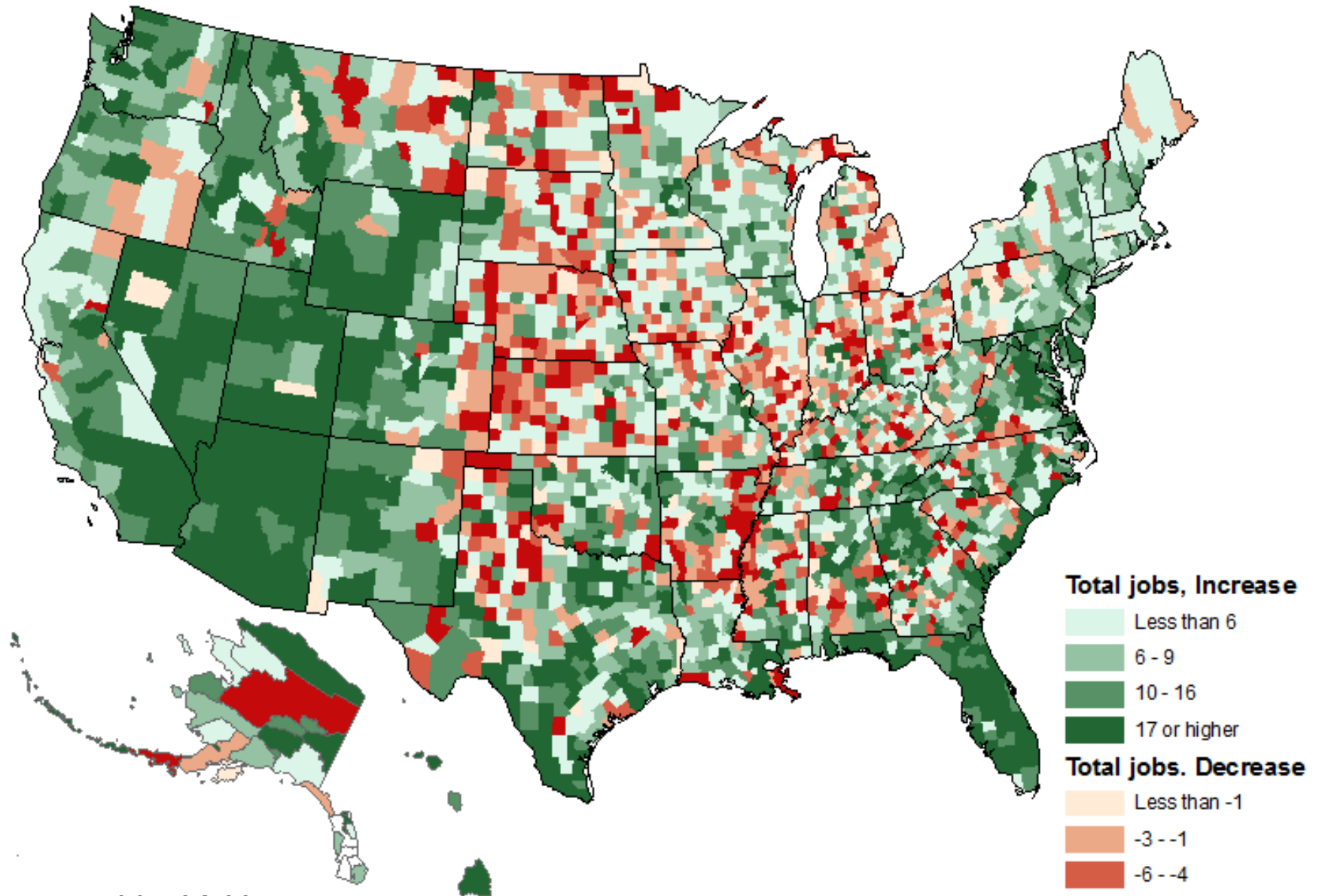
\*With thanks to Yicheol Han and Minghao Li for analysis and charts.

\*\*Northeast Regional Center for Rural Development and \*\*\*National Agricultural and Rural Development Policy Center. **USDA/NIFA funding (various grants) is gratefully acknowledged.**

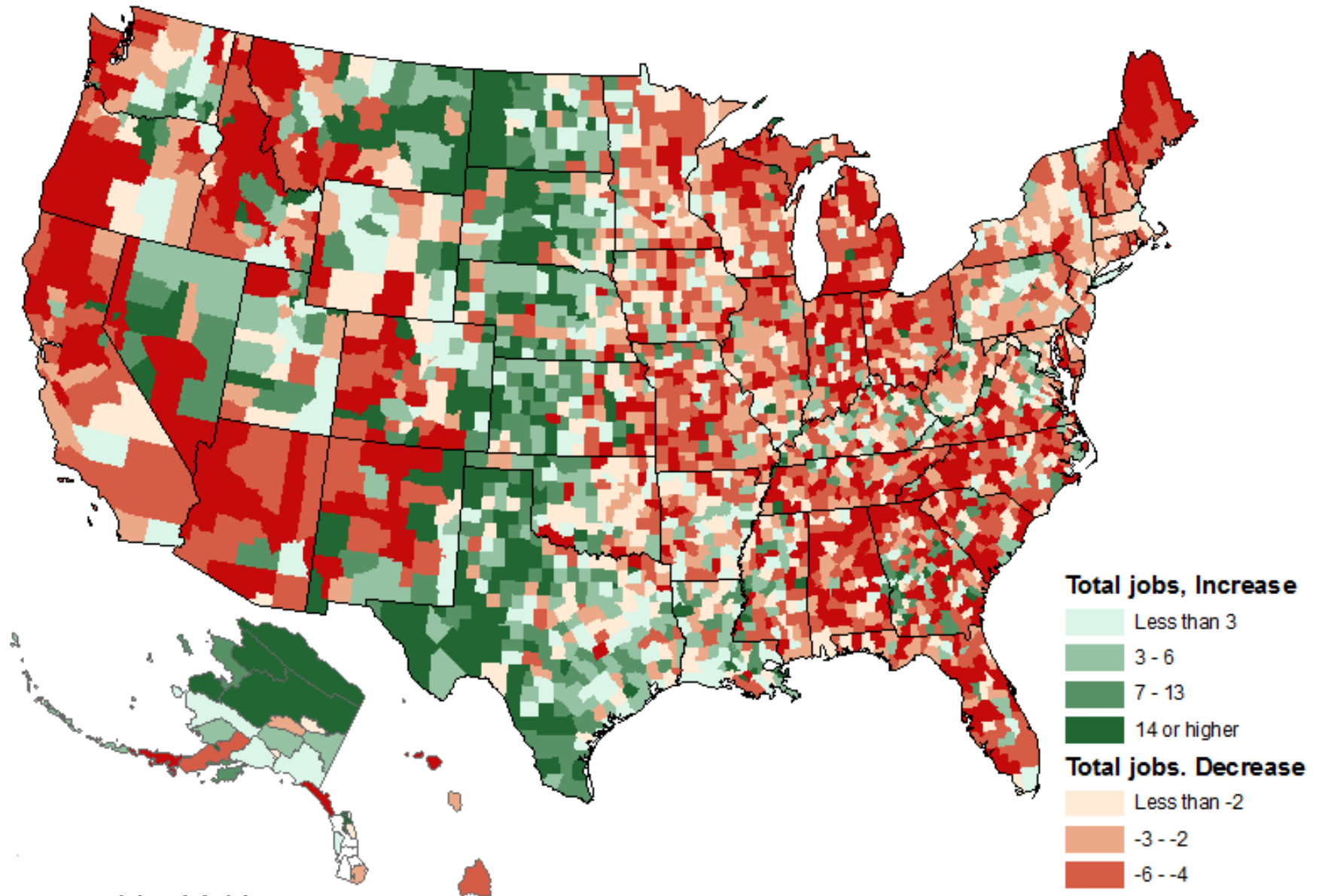
# Percent change in total jobs (2001-2011)



# Percent change in total jobs (2001-2007)

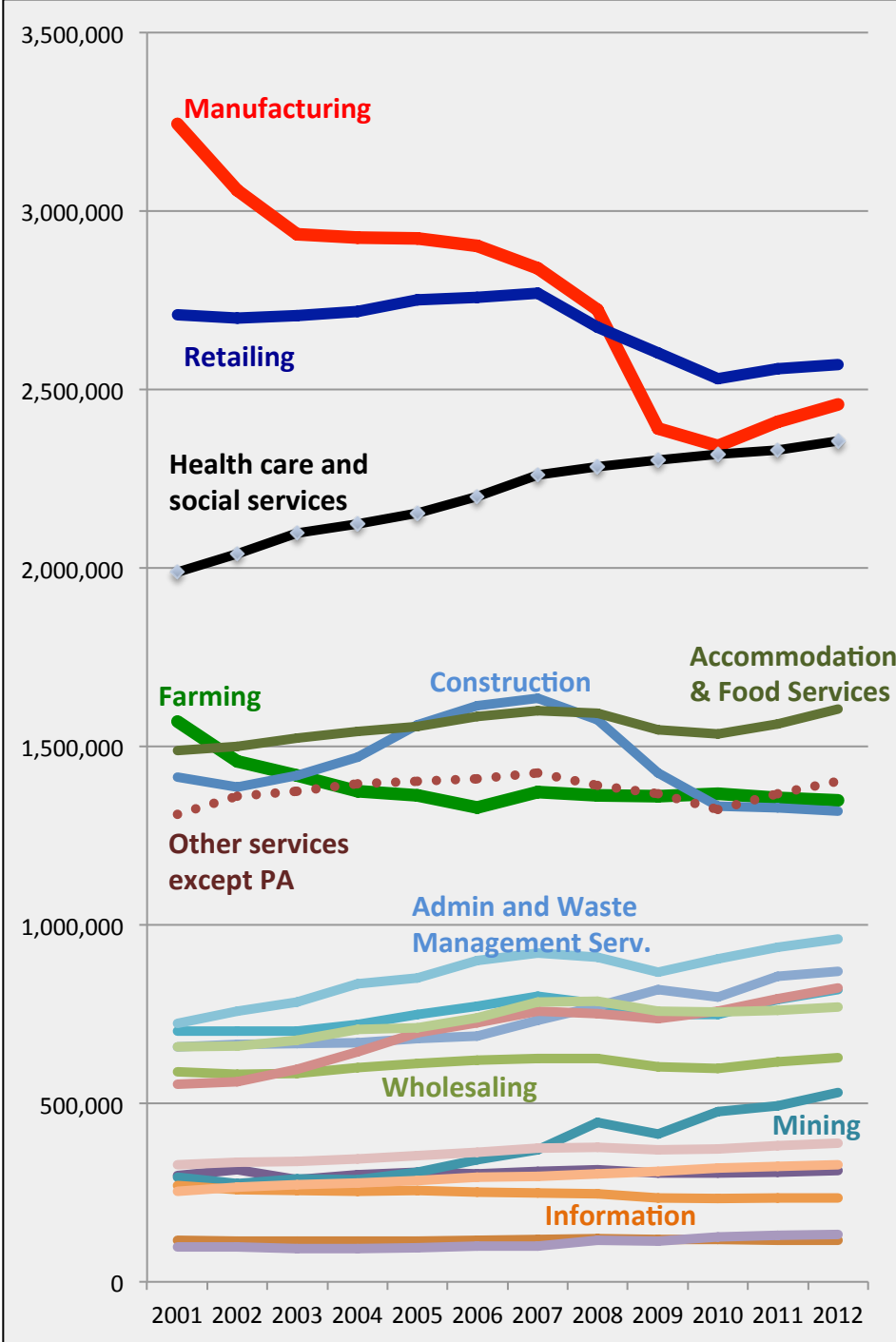


# Percent change in total jobs (2007-2011)

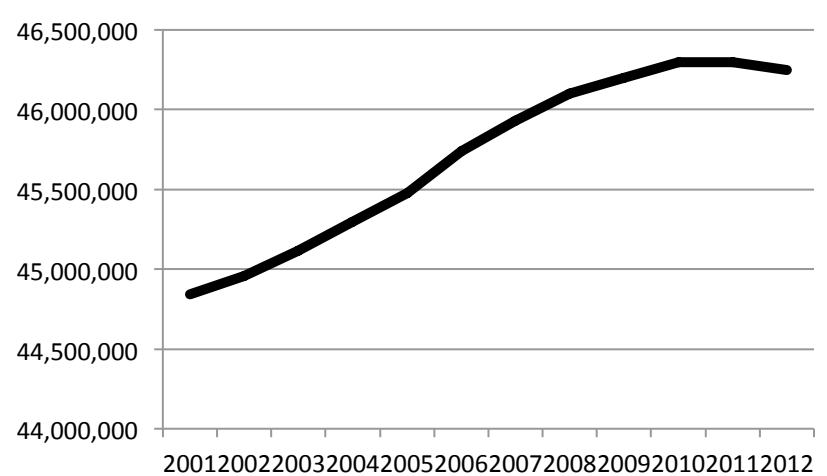


# Non-Metro Employment, 2001-2012

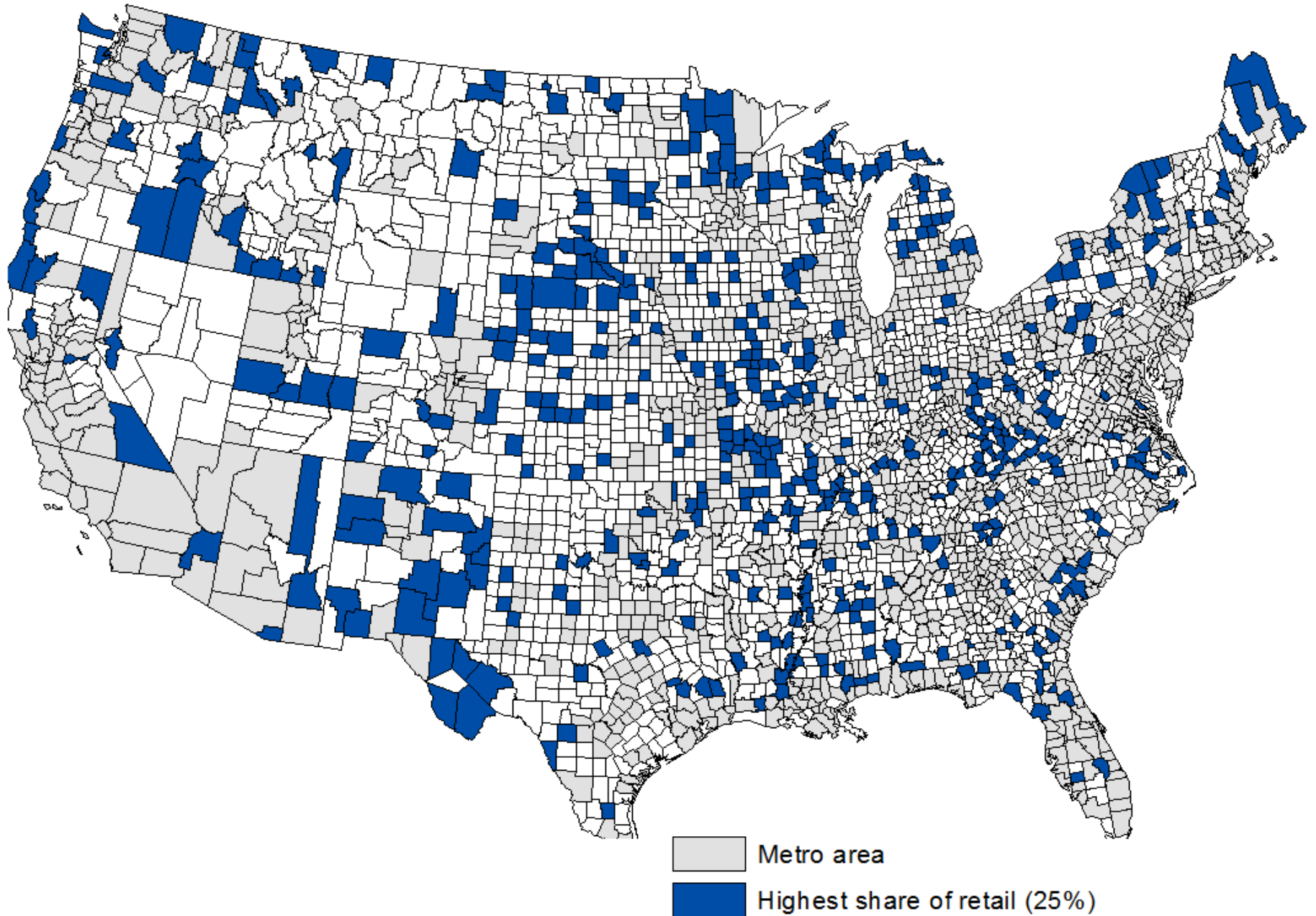
Source: BEA Data



## Non-Metro Population, 2001-2012



# Counties with 15.2% or more employment in retail, 2012



*Prepared by Y. Han*

# Examples of Studies Using Jobs Data

- Goetz and Debertain (*SEPS* 1993), estimating the demand for skills in counties
- Porter (*RS* 2003), regional econ. performance
- Desmet and Fafchamps (*JEG* 2005), ditto
- Stephens and Partridge (*G&C* 2011), role of self-employment in econ. dev. of ARC region
- Kandilov and Renkow (*NARDeP Policy Brief* 2013), impact of rural broadband
- Autor et al. (*AER* 2014), trade impacts, China

# Relative Importance of Non-Metro Retail

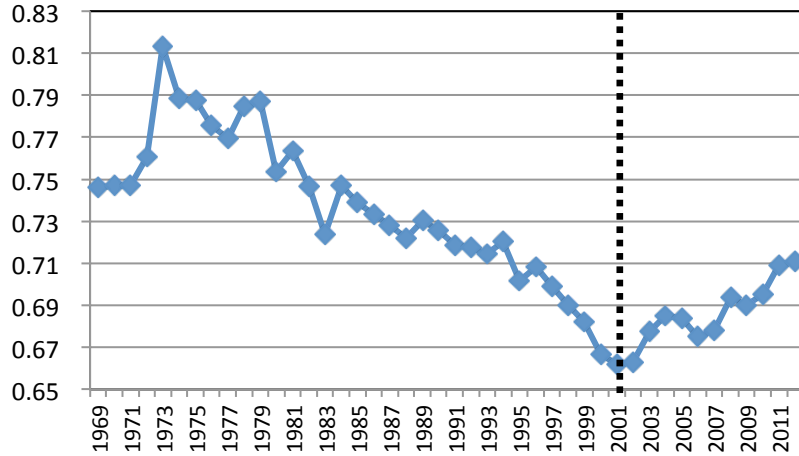
## Sources of Private Earnings and Jobs

| <i>Private Nonfarm Earnings</i>                | 2001  | 2012  |
|--|-------|-------|
| As percent of all earnings                     |       |       |
| Retail total                                   | 11.1% | 9.8%  |
| General Merchandise stores                     | 1.6%  | 1.8%  |
| As percent of retail earnings                  |       |       |
| General Merchandise stores                     | 14.8% | 18.2% |
| Retail as percent of all private non-farm jobs | 15.3% | 13.8% |

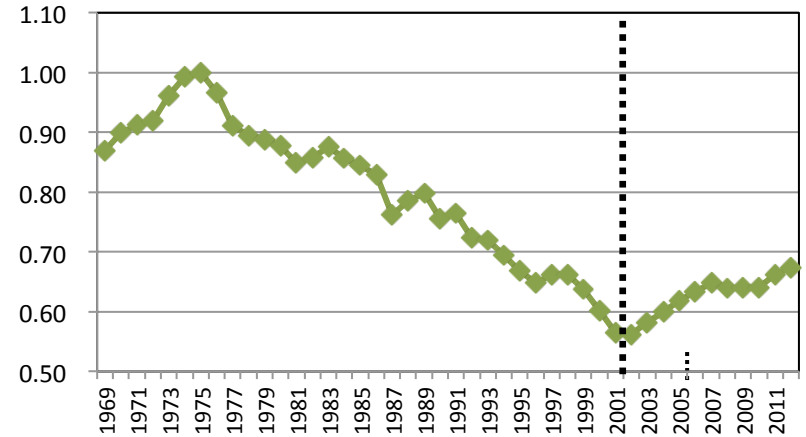


# 1969-2012 BEA Earnings Data

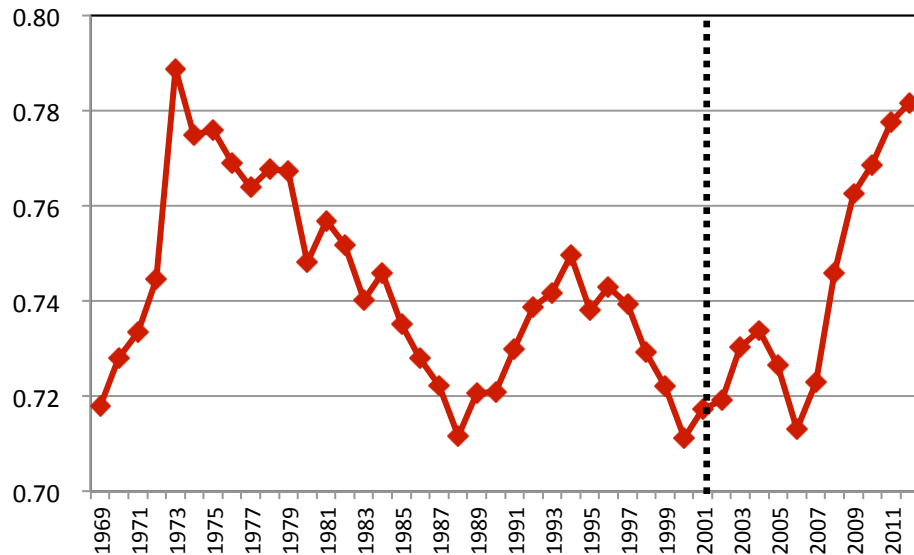
## Nonmet/Met avg. earnings/job



## Nonmet/Met avg. self-employed earnings/jobs

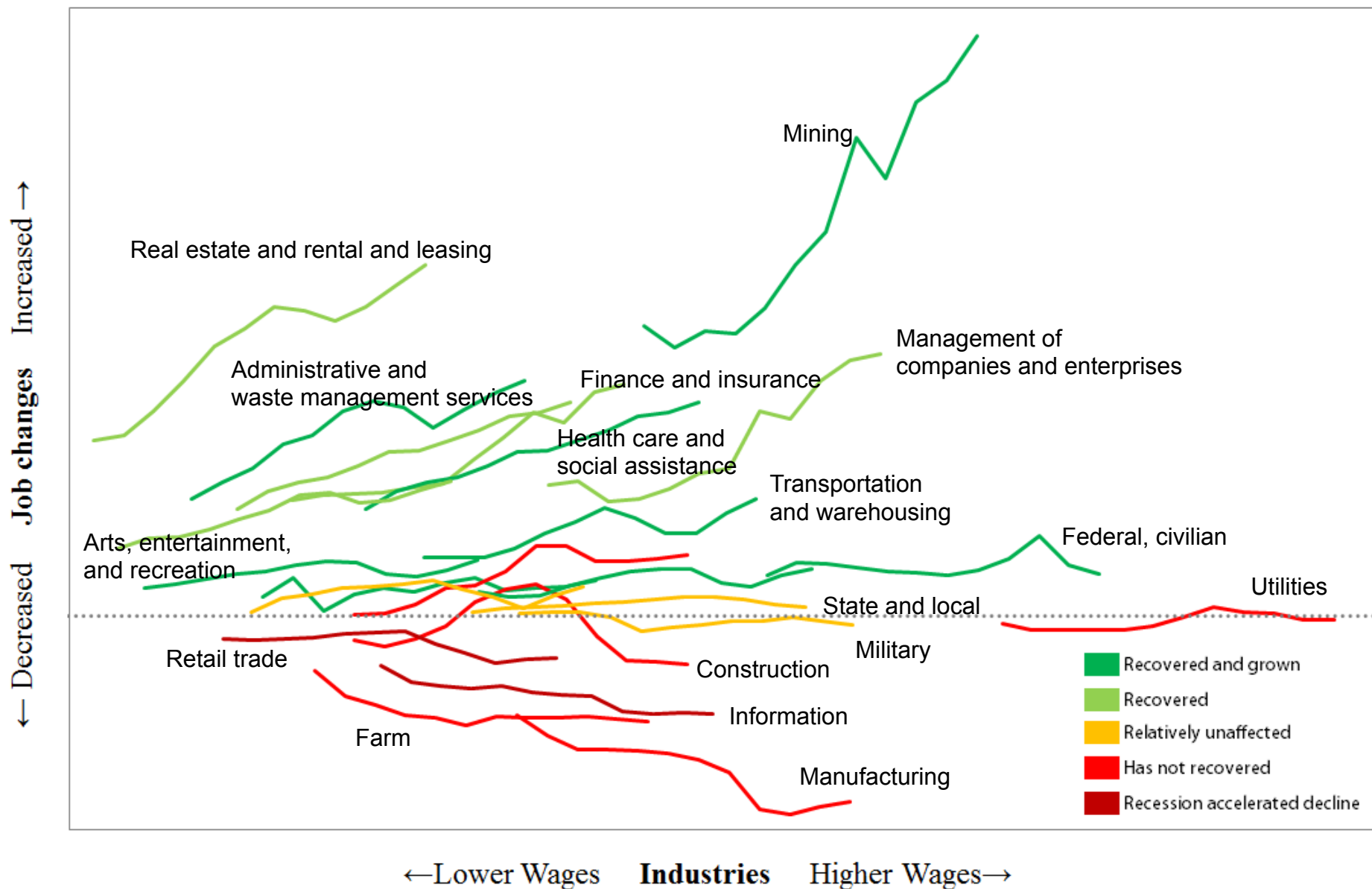


## Nonmet/Met avg per capita income

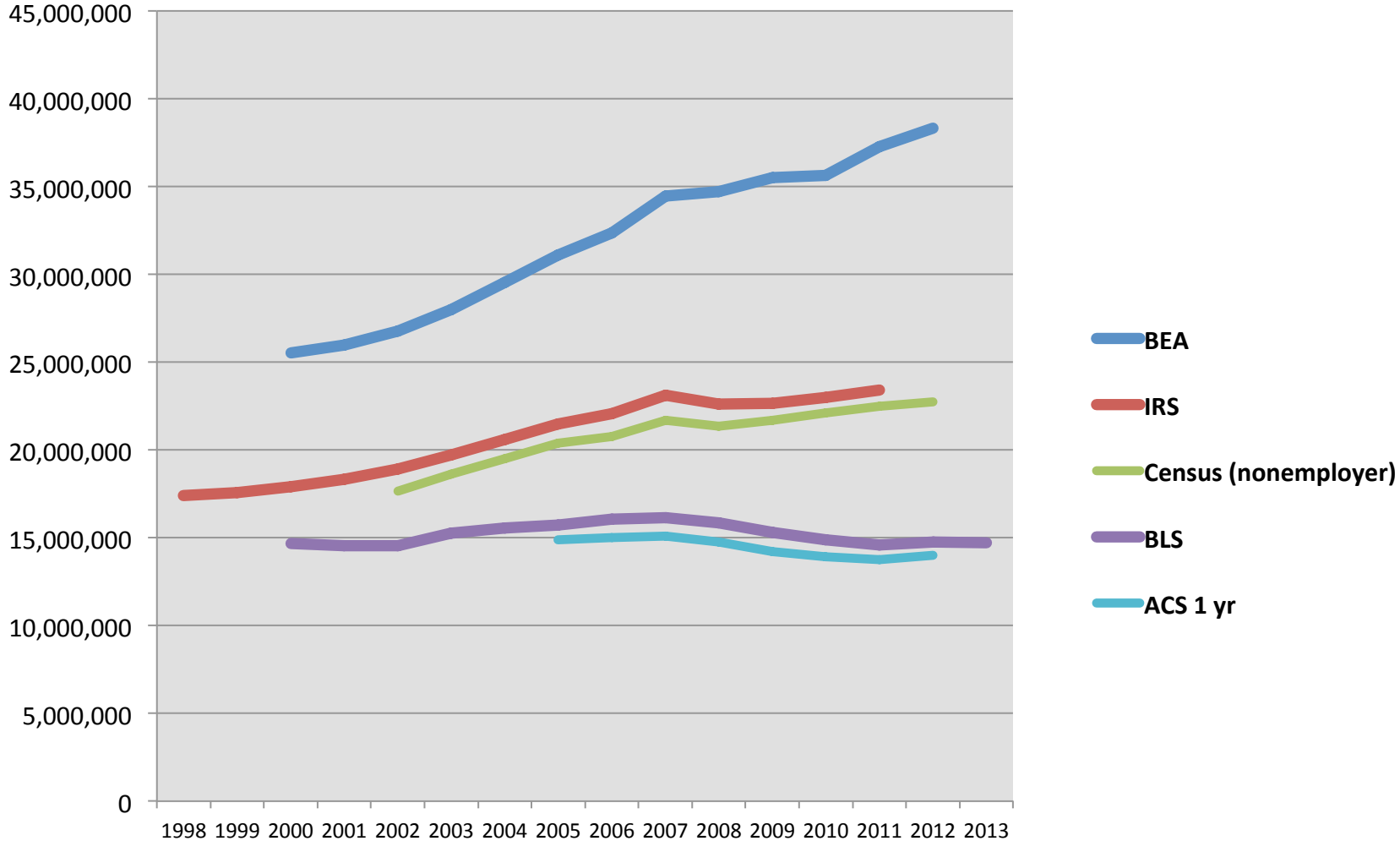


***The non-metro to metro per capita income ratio has increased to levels not seen since the early 1970s***

# Job Change vs. Wages, Non-Metro Counties, 2001-2012



# National self-employment numbers from different data sources, selected periods



Source: Minghao Li

# Final thoughts....

- Other county-level data also crucial: e.g.,
  - County Business Patterns
  - Quarterly Census of Employment and Wages
  - American Community Survey
- It is one thing to know where the national economy is heading...
  - Also essential for understanding local economic conditions farmers face
- Data needed to evaluate Federal programs and investments effectively...
  - vs. flying in the dark
  - Pennywise or Pound-foolish?

# Metro portion

