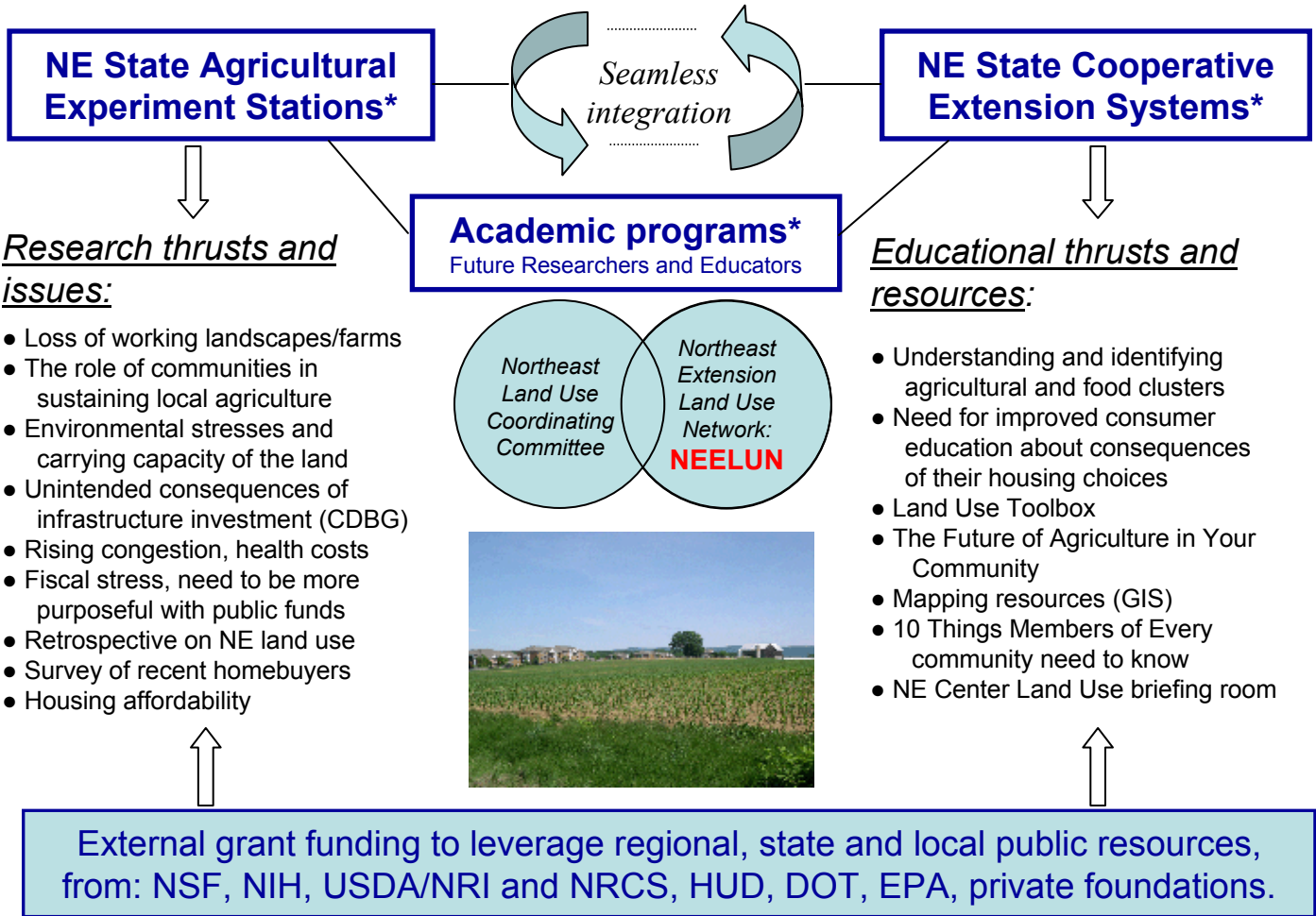




The Northeast Regional Center for Rural Development Land Use Research and Outreach Consortium

<http://www.cas.nercrd.psu.edu/LUROC.htm>



Research thrusts and issues:

- Loss of working landscapes/farms
- The role of communities in sustaining local agriculture
- Environmental stresses and carrying capacity of the land
- Unintended consequences of infrastructure investment (CDBG)
- Rising congestion, health costs
- Fiscal stress, need to be more purposeful with public funds
- Retrospective on NE land use
- Survey of recent homebuyers
- Housing affordability

Educational thrusts and resources:

- Understanding and identifying agricultural and food clusters
- Need for improved consumer education about consequences of their housing choices
- Land Use Toolbox
- The Future of Agriculture in Your Community
- Mapping resources (GIS)
- 10 Things Members of Every community need to know
- NE Center Land Use briefing room



The Northeast Regional Center for Rural Development has created LUROC to establish a focal point for scientists and educators who are addressing the increasingly complex emerging land use issues in the Northeast region.

The population of the Northeast US is forecast to grow by 5.6 million people over the next 20 years. To accommodate this growth, 2.3 million additional housing units will have to be built.

It is becoming clear that if we continue to build and place homes haphazardly on the urban fringe, as we have in the past, that the economic, environmental, social and health-related problems that we are now experiencing will become increasingly severe.

Even as traffic congestion and other factors threaten the population's health, working landscapes are destroyed and public concern about the future role of agriculture in the region is increasing.

*Connecticut, Delaware, DC, Maine, Maryland, Massachusetts, New Hampshire, New Jersey, New York, Pennsylvania, Rhode Island, Vermont, West Virginia, The Northeast Regional Center for Rural Development and partner institutions, cooperating.



The Northeast Regional Center for Rural Development Investments in Land Use Workshops & Products: 2001-2004



2001

Farming on-the-Fringe Conference: Do Regulations Work? (co-sponsor with Swank Center, Ohio State)

C. Abdalla



Land Use Website launched, Fall 2001
http://www.cas.nercd.psu.edu/Land_use.htm

2002

Land Use Research Agenda-Setting Conference

S. Goetz, et al.



Edited Book (2005)
S. Goetz, J. Shortle and J. Bergstrom

NAREA* Land Use Policy Workshop: Conserving Farm and Forest in a Changing Rural Landscape

R. Johnston



Multiple authors



Land Use Session at the Northeast Research Association/Northeast Extension Directors Joint Summer Meeting

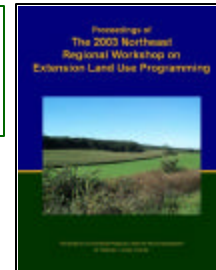
2003

Extension Prioritization of Land Use Issues Workshop

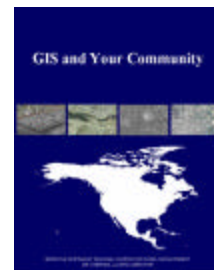
S. Goetz and T. Kelsey

Land Use & Community Toolbox Website
T. Collins

Galaxy II Conference Powerpoints



NAREA* Linkages Between Agricultural and Conservation Policies Workshop



NSF Workshop, Portland, ME

O. Tuncelli, T. Collins and S. Goetz

What the Public Values About Farmland Conference, with USDA and Farm Foundation

Rural Development Paper Series:
GIS Analysis of Land Use on the Rural-Urban Fringe (R. Ready and C. Abdalla)
The Nexus of Agricultural Land Use Policy and Rural Employment Generation in the Northeast United States (E. Tavernier et al.)

2004

Extension Land Use Follow-Up Conference

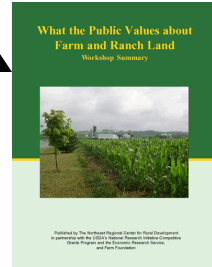
NEELUN Northeast Extension Land Use Network Tools Inventory/Gap Core Competencies
P. Marshall, R. Howe and T. Collins

LUROC: Land Use Research and Outreach Consortium
www.cas.nercd.psu.edu/LUROC.htm

L. Lynch and J. Duke



C. Abdalla



Edited book possible

July 6, 2004; S.J. Goetz
www.cas.nercd.psu.edu

*NAREA is the Northeastern Agricultural and Resource Economics Association